

# TRANSDUCERS



## UCP-422

### UCO-44, UCO-44T OPTIONS

#### DESCRIPTION

The **Kele UCO-44** and **UCO-44T Options** are designed to be used with the Kele UCP-422 Series electronic/pneumatic transducer. The **UCO-44 Option** allows the UCP-422 to be controlled by a pulse-width modulated (PWM) signal. The **UCO-44T Option** allows the UCP-422 to be controlled by a tri-state input signal. These options are mounted in an expander ring attached to the UCP-422.

#### FEATURES

- **Selectable PWM time base 0.1-2.65, 5.2, 12.85, 25.6, or 0.59-2.93 sec**
- **Selectable tri-state time base 2.55, 5.1, 12.75, 25.5, 59.9, 90.5, or 119.9 sec**
- **255-step resolution**
- **Positive or negative input reference**
- **AC/DC voltage**
- **LED indication**

#### OPERATION

##### UCO-44 Option

The **UCO-44 Option** accepts a pulse-width modulated input and produces an internal 4-20 mA current signal that controls the UCP-422. The standard time base is 25.6 seconds but is switch-selectable for any of the other four ranges. The **UCO-44 Option** responds to the elapsed time when the controlling computer closes the contacts wired in series with the signal SIG IN + or SIG IN - terminals. Each pulse received will produce a corresponding pressure output. The transducer will hold this signal until given a pulse with a different value.

##### UCO-44T Option

The **UCO-44T Option** is controlled from two discrete contact closures or one tri-state output from a controlling computer. Each signal given the transducer will ramp an internal 4-20 mA signal up or down to control the UCP-422. A contact closure wired in series with the SIG IN + terminal will increase the output in proportion to the length of the signal given. A contact closure wired in series with the SIG IN - terminal will decrease the output in proportion to the length of the signal given.

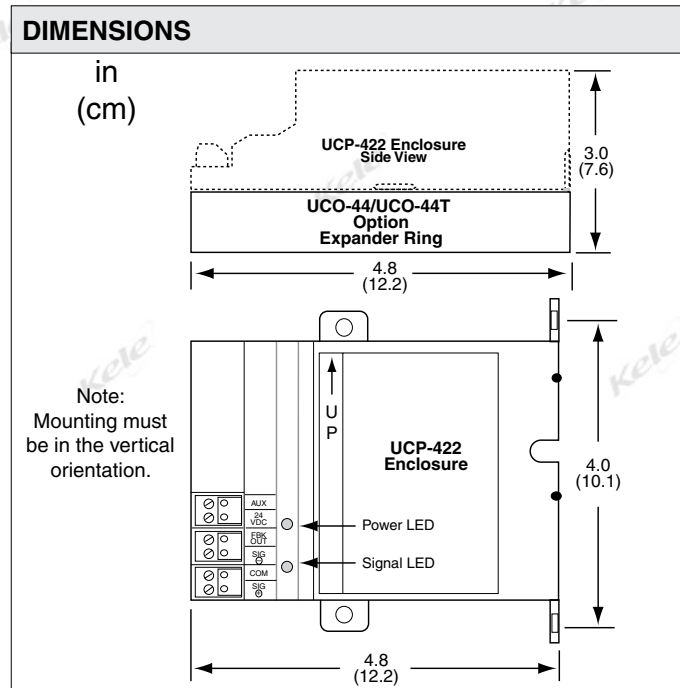
#### LED INDICATION

**PWR LED** - On when 24V is present

**SIG LED** - On only when an input signal is present



Shown with Optional Pressure Gauge

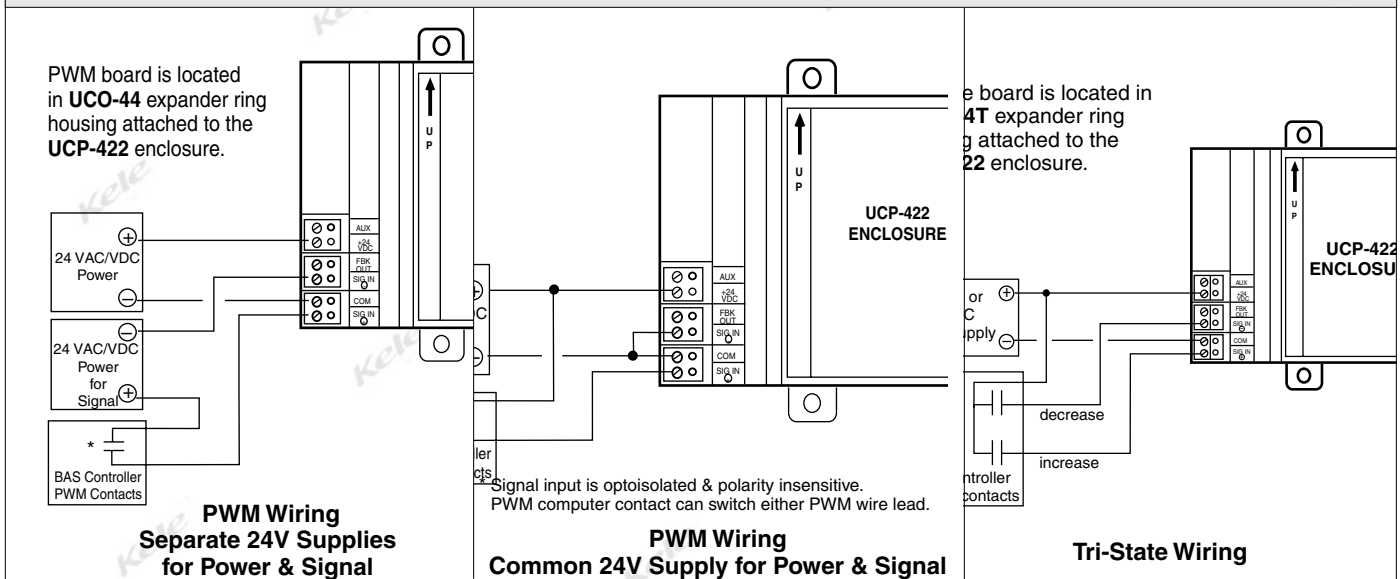


#### SPECIFICATIONS

Model	Supply Voltage	Supply VA	Input	Output
UCP-422-44	24 VAC/VDC	100 mA maximum (half-wave) at 24 VAC, 50 mA at 24 VDC	PWM; time base 0.1 to 2.65, 0.1 to 5.2, 0.1 to 12.85, 0.1 to 25.6 (factory setting), or 0.59 to 2.93 seconds (internally DIP switch selectable)	3-15 psig (21-103 kPa)
UCP-422-44T			Tri-state; time base 2.55, 5.1, 12.75, 59.9, 90.5, 119.9, or factory-set 25.5 seconds (internally DIP switch selectable)	



### WIRING



### CALIBRATION

**Important!** To change the time base, the transducer must be disassembled. A time base other than the factory setting may be specified at the time of order entry.

#### Time Base Selection

- Remove two screws from the bottom plate of the enclosure.
- Carefully remove the PWM/Tri-state board and locate time base select switches.
- Set switches 3, 4 & 5 to desired time base as shown in table. Switches #1, #2, #6, #7 & #8 are not used and should be in the off position.
- Carefully reassemble the transducer, ensuring that socket and pins are properly aligned.
- No other adjustment or calibration is required.

**TABLE 1. TIME BASE SELECTION**

PWM TIME BASE (sec)	TRI-STATE TIME BASE (sec)	SWITCH		
		3	4	5
0.1-2.65	2.55	Off	Off	Off
0.1-5.2	5.1	Off	Off	On
0.1-12.85	12.75	Off	On	Off
0.1-25.6 (factory setting)	25.5 (factory setting)	Off	On	On
0.59-2.93	59.9	On	Off	Off
	90.5	On	Off	On
	119.9	On	On	Off

### ORDERING INFORMATION

MODEL	DESCRIPTION
<b>UCP-422-44</b>	Electronic / pneumatic transducer PWM option (factory installed)
<b>UCP-422-44T</b>	Electronic / pneumatic transducer tri-state option (factory installed)